



**Basso  
Legnami**

**Since 1934 with commitment  
and professionalism**

---

[www.bassolegnami.it](http://www.bassolegnami.it)





Basso  
Leonardi



**Basso Legnami srl** is a historic family business whose activities were initially undertaken by Marco Basso, in 1934.

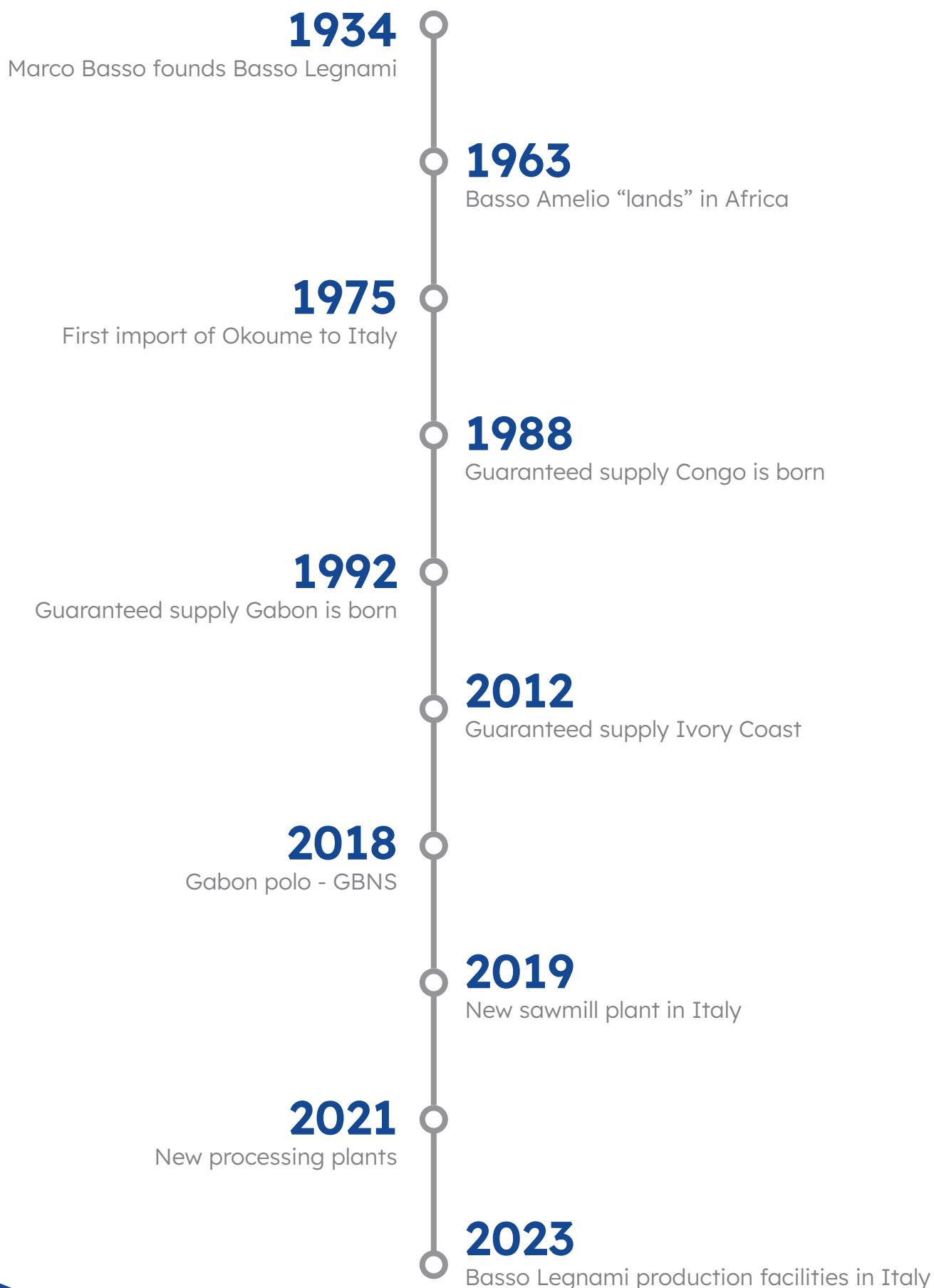
**Basso Legnami srl** is a manufacturer, importer, processor and distributor of wood-based products. In 90 years of activity we have developed special relationships with producers in the growth areas of the various wood species on the **5 continents**, and the raw material is sourced and tested directly in the best production areas. The selection criteria first and foremost follow the logic of **environmental sustainability**, legality, complying with the requirements of EUTR, and the FSC and PEFC certifications of which the company boasts.

The facility in Italy has a sawmill, steaming and drying plants, as well as additional special equipment that make the company capable in processing into special products for a variety of sectors, such as Nautical, Building, Furniture. The company boasts the **development and patenting of a variety of special products**, including:



Basso Legnami production facilities in Rovasenda





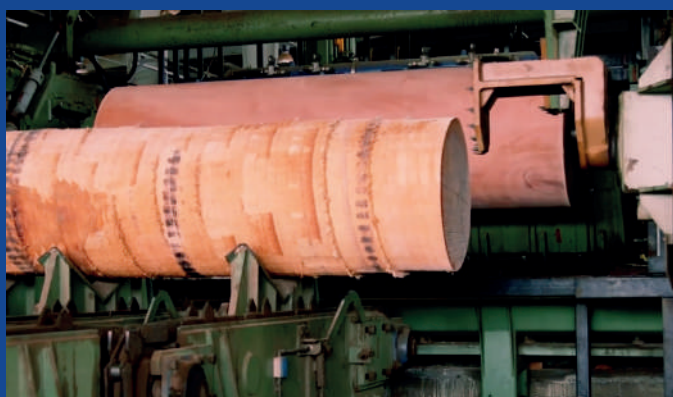
It is equipped with warehouses amounting to 110,000 m<sup>2</sup>, 40,000 m<sup>2</sup> of which are covered, designed to ensure the best conditions for storage and timely distribution.

The company has had direct production in Africa since the 1980s. The hub in Gabon, in the capital city of Libreville, has sawmilling, slicing, peeling and pressing facilities for the production of multilayer plywood panels. Always specializing in international trading, the company sells sawn, peeled, sliced and plywood in direct supplies to all countries of the world. The sales organization, formed by **highly professional people** located in Italy and abroad, is ready to respond to every market request.

**Basso Legnami** is present in the countries of origin with its **own productions and with direct collaborators** who follow the testing with scrupulous attention. The selection criteria first and foremost follow the logic of environmental sustainability and reforestation, complying with the **requirements of EUTR and the FSC® and PEFC™** certifications of which the company boasts. Supplies come from all five continents.

**Basso Legnami** especially has a long history of direct presence on African soil, where it has production and marketing exclusives.

## Basso Legnami production facilities in Gabon







## Raw material processing

Basso Legnami has the necessary equipment for first processing into sawn timber, veneer, plywood and veneer, and its distribution around the world.



## Marine products

We specialize in providing the highest quality materials for boatyards, which guarantee the high reliability.



## Design solutions

We provide our experience to find the right solution to decorate your home, both outside and inside.

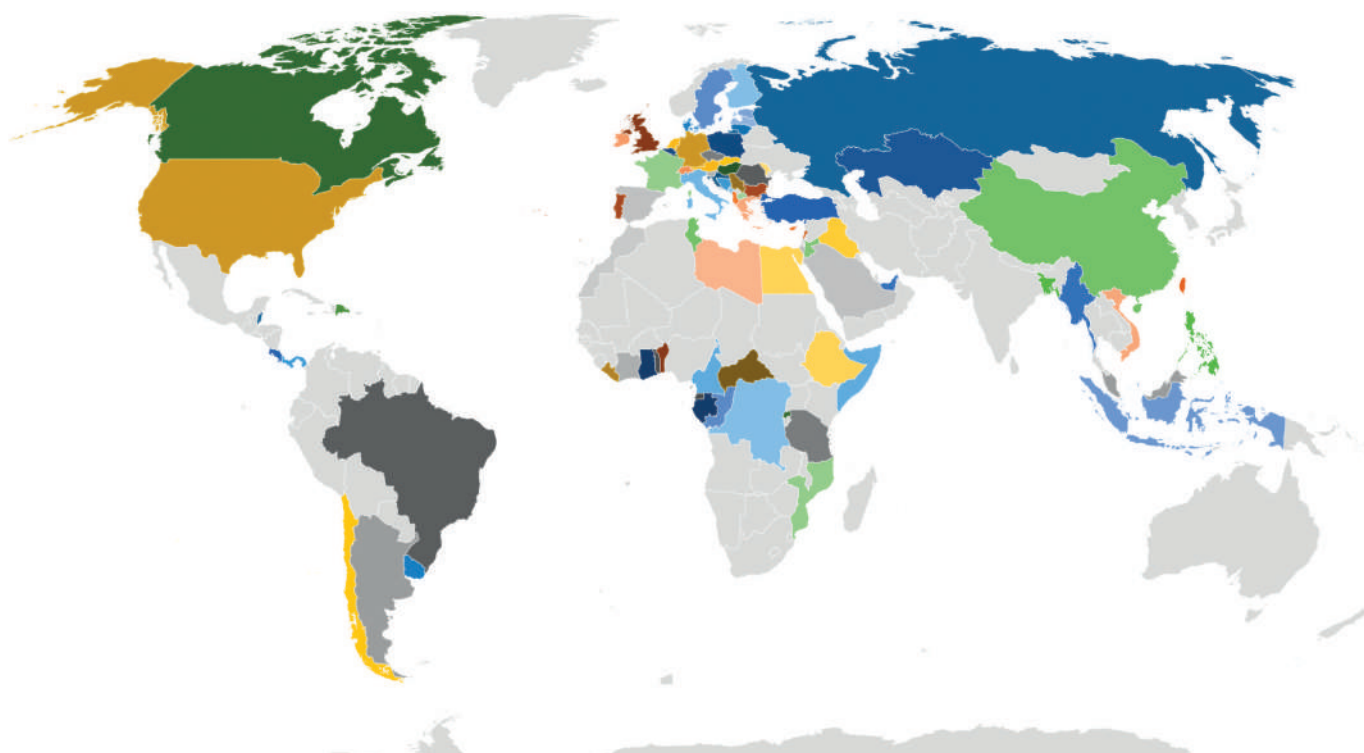


## International trading

Basso Legnami has always been involved in the international trading of wood raw material.



# Countries where we work



United Arab Emirates  
Albania  
Argentina  
Austria  
Bosnia and Herzegovina  
Bangladesh  
Belgium  
Bulgaria  
Brazil  
Bahamas  
Belize  
Canada  
Republic of Congo  
Switzerland  
Ivory Coast  
Chile  
Cameroon  
China  
Costa Rica  
Cyprus  
Czech Republic  
Germany  
Denmark  
Dominican Republic  
Estonia  
Greece  
Spain  
Ethiopia  
Finland  
France  
Gabon

United Kingdom  
Equatorial Guinea  
Hong Kong  
Croatia  
Hungary  
Indonesia  
Ireland  
Israel  
Iraq  
Italy  
Jordan  
Kazakhstan  
Lebanon  
Liechtenstein  
Liberia  
Lithuania  
Luxembourg  
Latvia  
Libya  
Morocco  
Moldavia  
Montenegro  
Macedonia of the North  
Burma  
Malta  
Malaysia  
Netherlands  
Panama  
Philippines  
Poland  
Portugal

Romania  
Serbia  
Russia  
Ruanda  
Sweden  
Singapore  
Slovenia  
Slovakia  
Somalia  
Tunisia  
Turkey  
Taiwan  
Tanzania  
United States of America  
Uruguay  
The British Virgin Islands  
U.S. Virgin Islands  
Vietnam  
Serbia  
Saudi Arabia  
Egypt  
Democratic Republic of Congo  
Mozambique  
Côte d'Ivoire  
Ghana  
Benin  
Togo  
Liberia  
Central African Republic





## PLYWOOD

Birch  
Sapelli  
Eucalyptus  
Chilean Pine

Elliotti Pine  
Ozigo  
O.S.B.  
Falcata

Okoumé



## SCANTLINGS

Pine FJ

Ozigo

Okoumé



## YACHTING



Teak

Iroko

Mahogany



## FLOORING

Zebrawood  
Oak  
Tanzania's Ash

Tali  
Gabon's Walnut  
Doussie

Ash  
Chestnut  
Teak



## FAÇADE







## VENEER

Ozigo  
Okoumé

Sapelli  
Ilomba

Fromager



## BOARDS

Spruce  
Afrormosia  
Tulipier  
Lime wood  
Teak  
Tali  
Sipo  
Sassafras  
Sapelli  
Oak  
Oak USA  
Douglas fir  
Strobus Pine  
Pine  
Poplar

Pao Rose / Kisasamba  
Ozigo  
Okan  
Walnut  
Niové  
Movingui  
Moabi  
Larch  
Koto  
Kotibe  
Iroko  
Kossipo  
Ash  
Fraké  
Gombe

Ebiara  
Vaporized Beech  
Douglas  
Ako  
Alep  
Andoung  
Ayous  
Chestnut  
Okoumé  
Bibolo  
Beli  
Doussié  
Padouk  
Ovangkol  
Olive Tree



## SLICED VENEER

Agba/Tola  
Iroko  
Okoumé

Ovangkol  
Teak  
Zebrawood

Fine Line Poplar

---

## Environmental sustainability and reforestation

Preserving the Earth's natural resources is serious business.  
That's why our company is certified for sustainable forest management.  
Discover and download all certificates on our website [www.bassolegnami.it](http://www.bassolegnami.it)



### Programme for the endorsement of forest certification

PEFC™ (Programme for the Endorsement of Forest Certification) is the world's most widely used Forest Certification System, founded by small forest owners to demonstrate the sustainability of the management of their forests.

PEFC™ forest certification can ensure that certified forests are managed sustainably according to globally recognized criteria that protect the environmental, social and economic role of forests.



### Forest Stewardship Council

The FSC® label identifies products containing wood from forests that are properly and responsibly managed according to strict environmental, social and economic standards.

The forest of origin has been independently inspected and evaluated in accordance with these standards (principles and criteria of good forest management), established and approved by the Forest Stewardship Council® a.c. through stakeholder participation and consensus.



### European Union Timber Regulation

European Union Timber Regulation 995/2010 EUTR (European Union Timber Regulation) affects all operators and traders dealing with wood and wood products from both EU and non-EU countries. All products traded by Basso Legnami srl comply with EUTR/due diligence specifications. The regulation combats trade in illegally harvested wood and products derived from it through three main obligations:

- 1) it prohibits the placing of illegal timber and products derived from it on the EU market;
- 2) it obliges first-time traders to observe "due diligence" by taking measures to verify legality;
- 3) it obliges traders to keep records with the names of suppliers and customers to ensure product traceability.



### Rina

Specializing in testing, inspection, certification, and engineering solutions in a wide range of markets, including marine, energy and mobility, real estate and infrastructure, space and defense, and industry 4.0. We collaborate with our clients to find innovative solutions to complex problems, leveraging our expertise to anticipate and address any challenges along the way.

Our ultimate goal is to improve the quality of life and build sustainable values for future generations. Our people come from diverse cultures, countries and backgrounds, and respecting and embracing these differences makes us much stronger. Ship classification has been the cornerstone of RINA's business since its inception, propelling it to become one of the world's leading maritime classification societies. Over time it has gradually expanded the range of services it offers, and diversified its areas of operation. RINA's vast experience, combined with its commitment to continuous development and training, ensures the highest levels of professionalism and expertise.



### Consorzio Vero Legno

Vero Legno (Real Wood) is the Italian trademark guaranteeing the authenticity of Wood and artifacts made from this precious raw material.

Vero Legno certifies the quality of products from companies operating in Italy in the wood-furniture sector. The mark guarantees consumers the authenticity of products and the physical characteristics of the Wood used to produce them, distinguishing them from imitations of other raw materials.





## **Basso Legnami Srl**

### **Italy Headquarters**

Via dell'Artigianato, 6  
13040 Rovasenda (VC)

[basso@bassolegnami.com](mailto:basso@bassolegnami.com)  
[www.bassolegnami.it](http://www.bassolegnami.it)

Tel.: +39 0161879797

### **Gabon Headquarters**

Zone portuaire d'Owendo  
B. P. 6046 - Libreville - Gabon

[direction@gbns-lbv.com](mailto:direction@gbns-lbv.com)  
[www.gbnsgabon.com](http://www.gbnsgabon.com)